

# cooee spaces three quarter wall

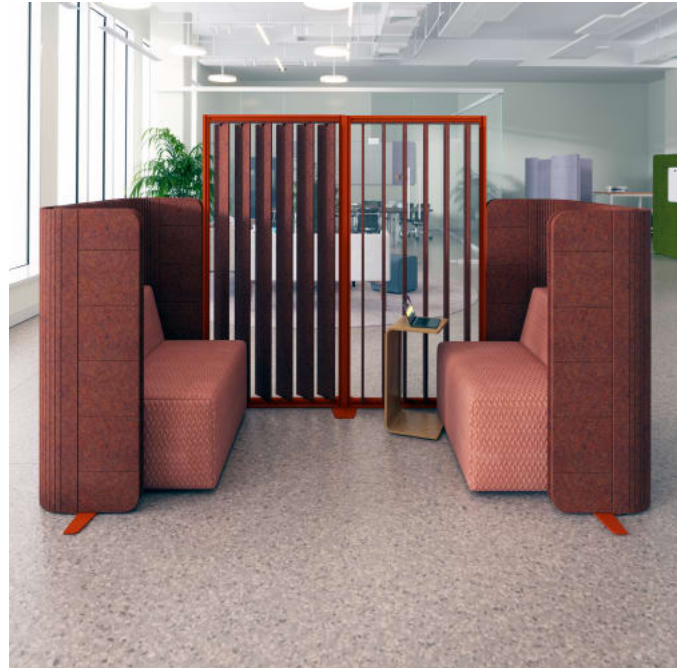
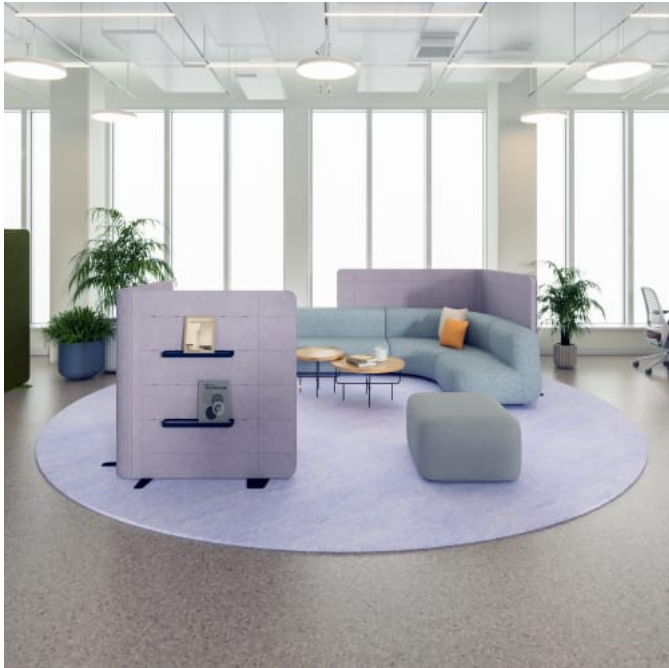
Walls » Freestanding Walls



Collections: **Cooee Spaces, Cooee**

# cooee spaces three quarter wall

Walls » Freestanding Walls



Cooee Spaces Three Quarter Wall - Brick Spice



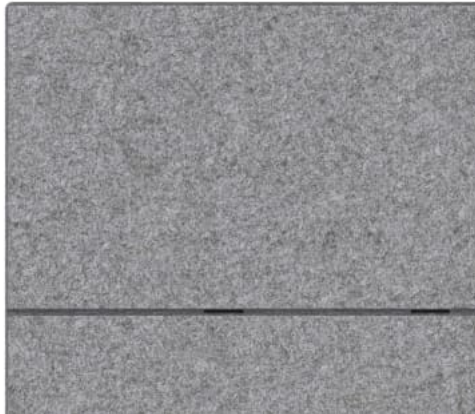
Cooee Spaces Three Quarter Wall - Wide Perspective



Cooee Spaces Three Quarter Wall - Narrow Perspective

# coooo spaces three quarter wall

Walls » Freestanding Walls



Cooo Spaces Wall - Square Corner Detail



Cooo Spaces Wall - Mounting Detail



Cooo Spaces Wall - Mounting Detail



Cooo Spaces Wall - Mounting Detail



# cooee spaces three quarter wall

Walls » Freestanding Walls



Cooee Spaces Wall – Mounting Detail



Cooee Spaces Wall – Concealed Cable Channel Open Detail



Cooee Spaces Wall – Concealed Cable Channel Closed Detail

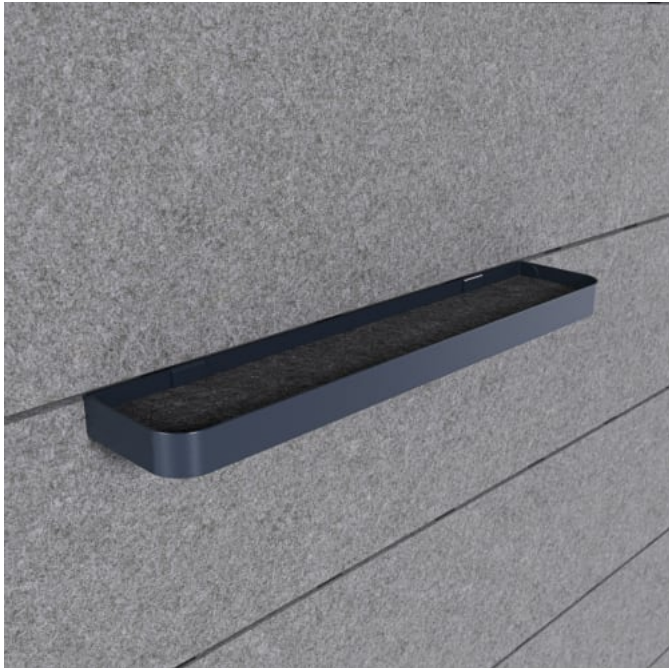


Cooee Spaces – Accessory Rail

# cooee spaces three quarter wall

Walls » Freestanding Walls

---



Cooee Spaces - Accessory Rail With Tray

# coooo spaces three quarter wall

Walls » Freestanding Walls

Strikes the perfect balance—giving you space to breathe while staying connected. Ideal for collaborative zones or visual division without full isolation.

- ✓ Absorbs Noise
- ✓ Acoustic
- ✓ Bleach Cleanable
- ✓ Easy Clean
- ✓ Easy Install

## Description

A more relaxed height that allows for openness while still shaping the space. Low Line delivers subtle spatial cues without overpowering.

Coooo Spaces Walls are modular, freestanding partitions designed to shape the way we work, learn, and collaborate. Available in two widths and full or three-quarter heights, these lightweight walls offer layout flexibility—whether you’re creating quiet retreats, team zones, or adaptable open spaces.

The three-quarter height—our Low Line option—offers a more relaxed profile that maintains openness while still shaping the environment. It delivers subtle spatial cues without overpowering the room, making it ideal for informal zones or light-touch division.

Each wall is constructed with an ultra-lightweight core and framed in a proprietary powder-coated aluminium extrusion for strength and stability. The surface is finished in your choice of acoustic PET colors and designs, helping to reduce noise and visual distractions for a more focused environment.

A discreet magnetic cable cubby provides seamless wire management, allowing power to run internally through the wall. The hinged, flush-fitting cover opens effortlessly for easy access and snaps back into place to maintain a clean, uninterrupted profile. It’s a smart integration that supports charging and connectivity—without compromising on aesthetics.

The proprietary aluminium extrusion and feet are available in a selection of powder coat finishes, allowing you to coordinate every detail while maintaining functionality and aesthetic cohesion.

Coooo’s signature Tool Rail enables quick mounting of accessories including whiteboards, shelves, and hooks—empowering users to reconfigure and personalise their space with ease. Corner connectors and end caps extend layout possibilities, making Coooo Spaces Walls a truly versatile system.

From offices to education settings, Coooo defines space with clarity, acoustic performance, and design-forward thinking.

# cooee spaces three quarter wall

Walls » Freestanding Walls

How to Specify	Select 1 x PET Color
	Select 1 x Powder Coat Finish
	Refer Product Specification Guide
Composition	Density 0.5 lb/ft² 2.4 kg /m³
PET Colours	Refer Color + Finishes
Material	60% post-consumer recycled PET bottles.
	35% pre-consumer recycled content from PET chips
	5% bio-based Polylactic Acid (PLA)
	Accessories: Steel + PET insert/liner with powder coat finish
Powder Coat	Refer Color + Finishes
Dimensions	34" (867 mm) w x 55" (1396 mm) h x 3" (75 mm) d
	48" (1207 mm) w x 55" (1396 mm) h x 3" (75 mm) d
Fire Rating	ASTM-E84 – Class A classification AS ISO 9705 – 2003 – Group 1 classification EN-13501 – B-s2-d0 classification
Made In	USA
Lead Time	8 weeks
Assembly & Delivery	Flat pack delivery, minimal assembly required.
	See installation instructions for detail.

# cooee spaces three quarter wall

Walls » Freestanding Walls

---

Care Instructions	<p>Dab func. with a damp clean cloth and mild solution of liquid detergent and warm water. Repeat using only clean water, then pat dry with a lint free cloth.</p> <p>For difficult stains, use a solution of household bleach (10% bleach / 90% water).</p> <p>To remove the bleach, repeat using a clean, water dampened cloth, then pat dry.</p> <p>Always test in an inconspicuous area first and if you don't see the expected results, contact us.</p>
-------------------	--

---

Warranty	5-year warranty. Visit <a href="https://www.baresque.com.au/warranty">baresque.com.au/warranty</a> for complete details.
----------	--

---

Additional Comments	To see how vivid the colors truly are, it's easy to request a sample through the "Request information" button on this page, or you can ask for one from your local sales guru
---------------------	---

---



# cooee spaces three quarter wall

Walls » Freestanding Walls

## Colour & Finish Options

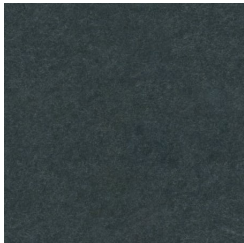
### func solid colors



# cooee spaces three quarter wall

Walls » Freestanding Walls

pebble



Twilight

pewter



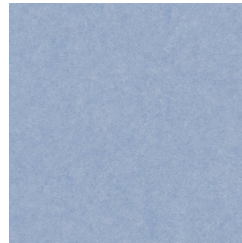
Sunshine

saffron



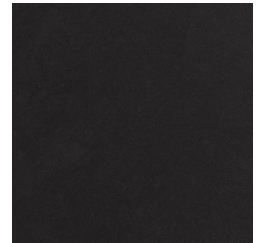
Ochre

smoke



Sky

storm

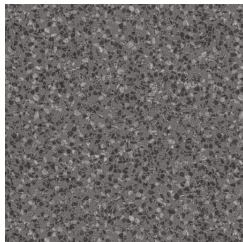


Tar

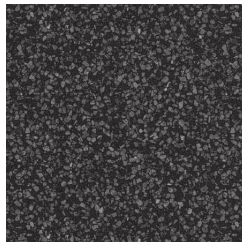
## func premium material



terrazzo light



terrazzo medium



terrazzo dark



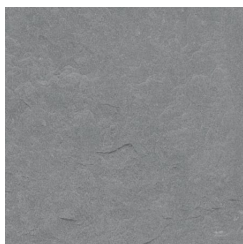
travertine light



travertine medium



travertine dark



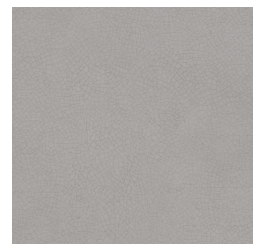
shale light



shale medium



shale dark



raku bone



raku luster



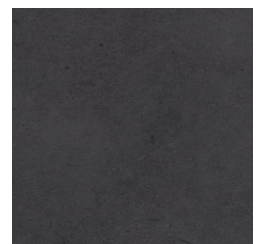
raku jade



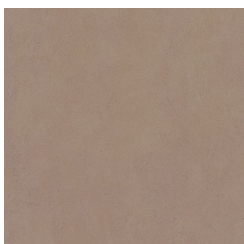
concrete cast



concrete polished



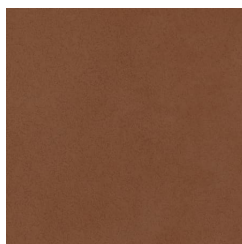
concrete dark tint



terracotta sun



terracotta mission



terracotta antique



# cooee spaces three quarter wall

Walls » Freestanding Walls

bleached

## func premium wood



knotty pine



maple



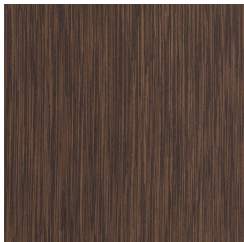
poplar



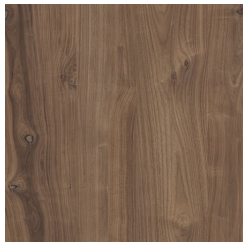
australian walnut



claro walnut



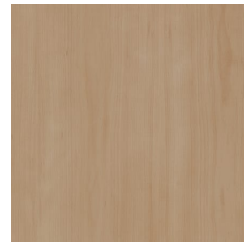
palmwood



rustic walnut



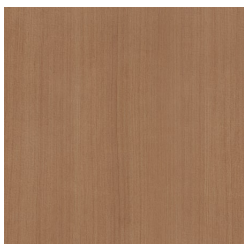
cherry



euro beech



lacewood



redwood

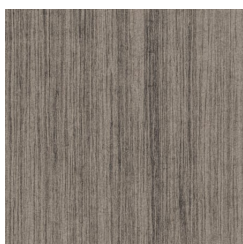


white oak

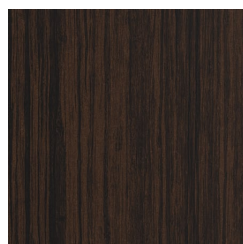
## func timber print



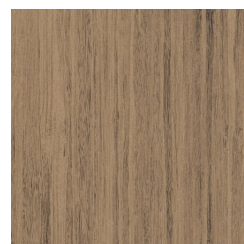
eucalyptus



ironbark



merbau

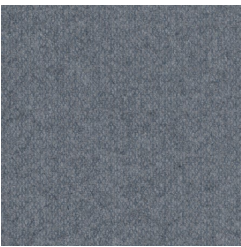


spotted gum

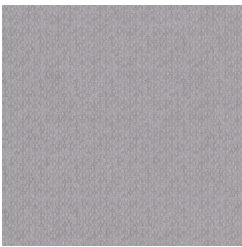
## func textile braid

# cooee spaces three quarter wall

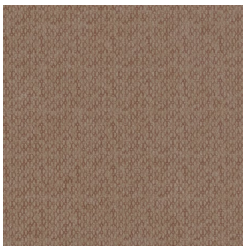
Walls » Freestanding Walls



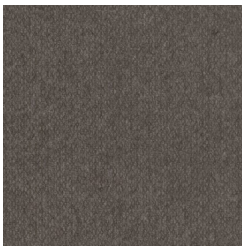
Cadet



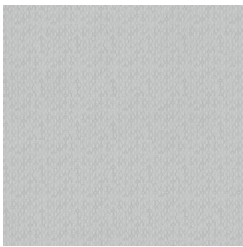
Chambray



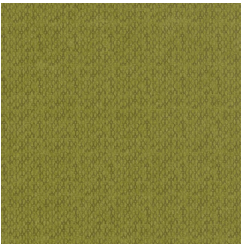
Ecu



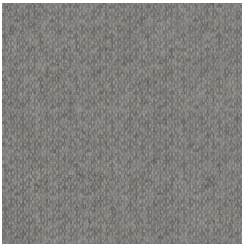
Fossil



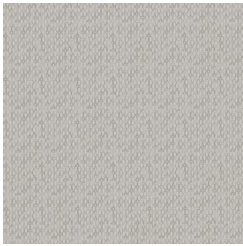
Frost



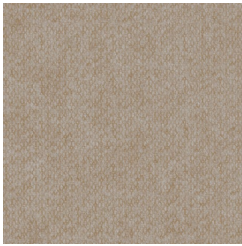
Grass



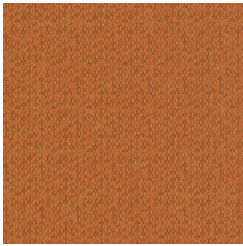
Greige



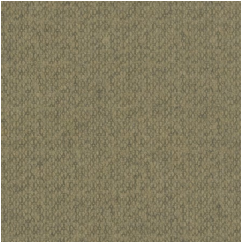
Ivory



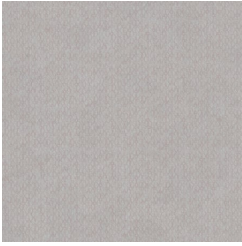
Linen



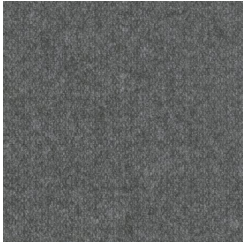
Mandarin



Meadow



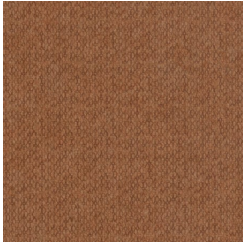
Parchment



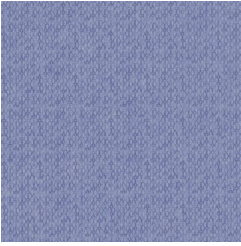
Pewter



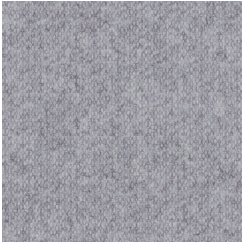
Pebble



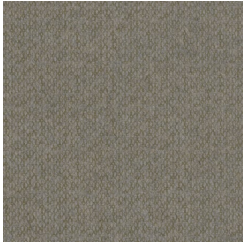
Saffron



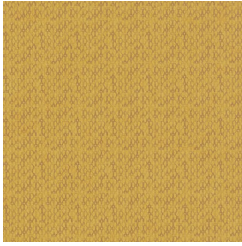
Sky



Smoke



Storm

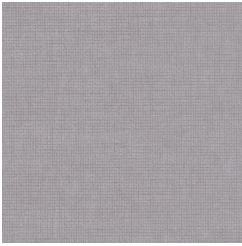


Sunshine

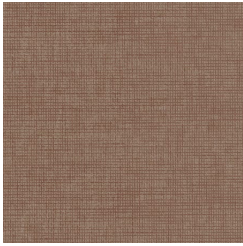
## func textile burlap



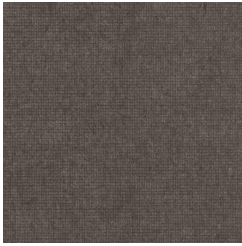
Cadet



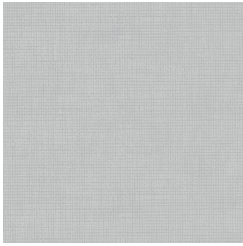
Chambray



Ecu



Fossil



Frost



# cooee spaces three quarter wall

Walls » Freestanding Walls



Grass



Greige



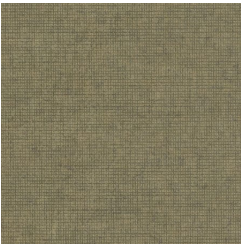
Ivory



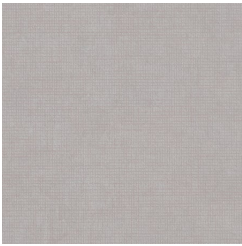
Linen



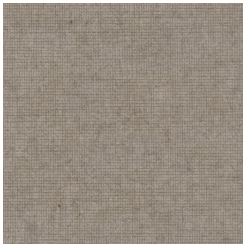
Mandarin



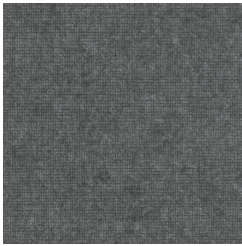
Meadow



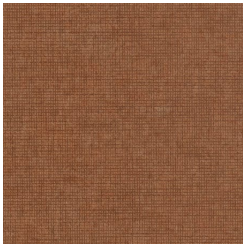
Parchment



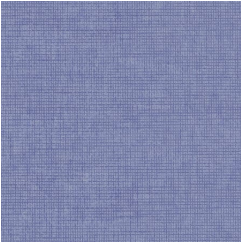
Pebble



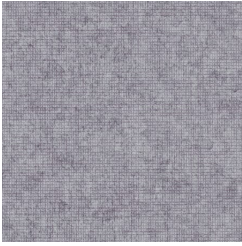
Pewter



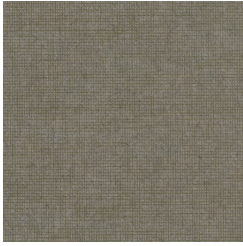
Saffron



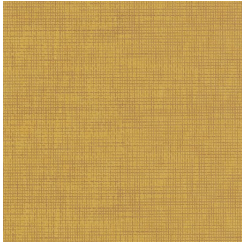
Sky



Smoke

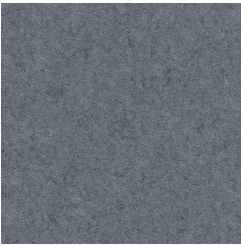


Storm

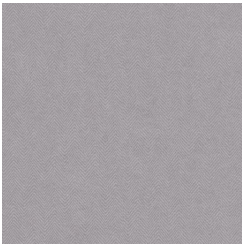


Sunshine

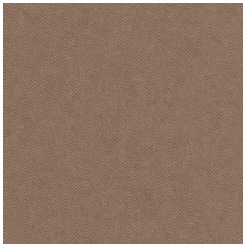
## func textile herring



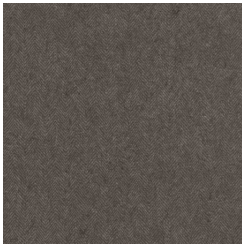
Cadet



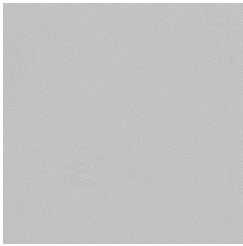
Chambray



Ecru



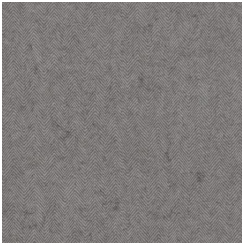
Fossil



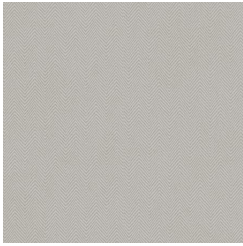
Frost



Grass



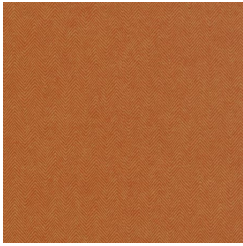
Greige



Ivory



Linen



Mandarin



# cooee spaces three quarter wall

Walls » Freestanding Walls

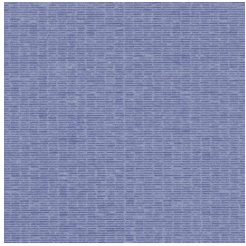


## func textile loom

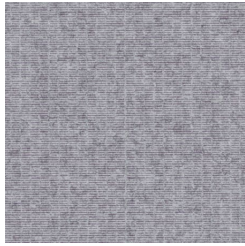


# cooee spaces three quarter wall

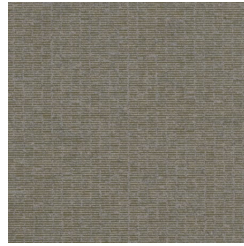
Walls » Freestanding Walls



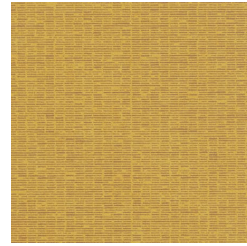
Sky



Smoke

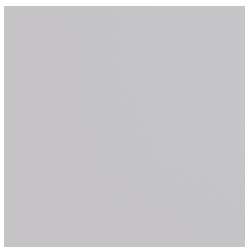


Storm

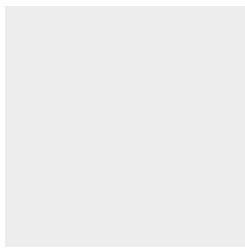


Sunshine

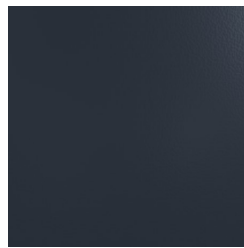
## func powdercoat



anodized silver



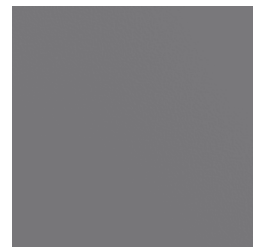
bengal white



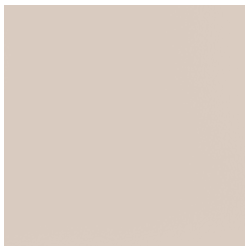
denim



fern



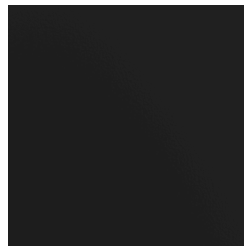
gunmetal



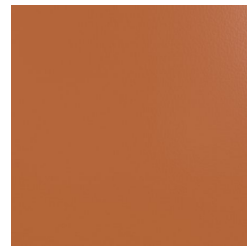
light grey



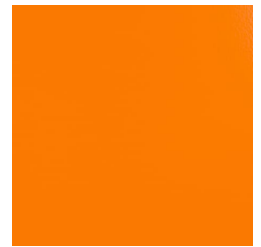
marigold



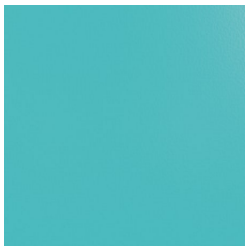
matte black



spice



tango



teal



terracotta