

cooee desking divider

Screens » Desking Screens



Collections: **Cooee**

Applications: **Desk Accessories (Dividers & Screens)**

cooee desking divider

Screens » Desking Screens



Cooee Desking Divider



Cooee Desking Divider C Clamp



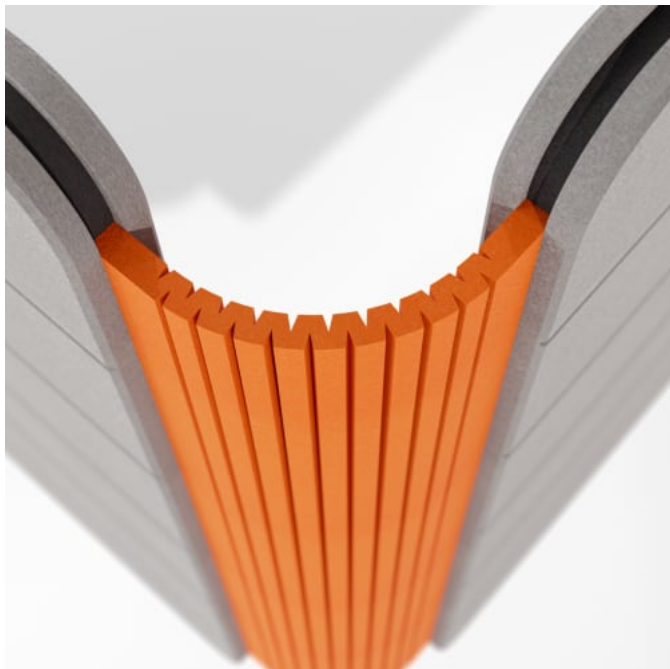
C=Clamp Close up



Corner Detail

cooee desking divider

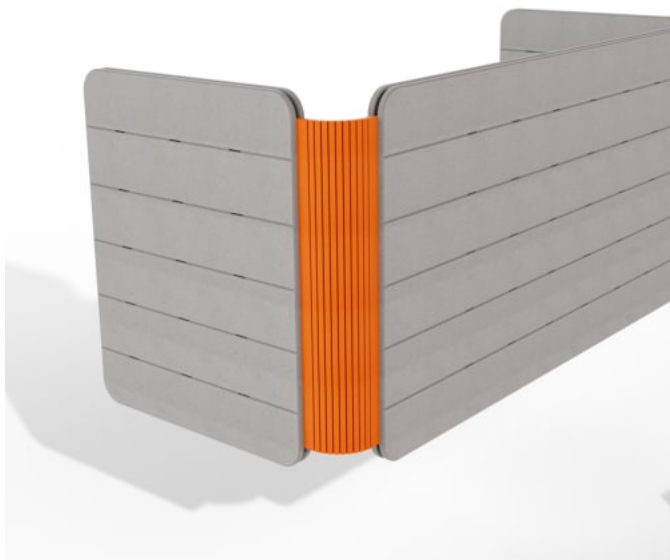
Screens » Desking Screens



Corner Detail Close up



Corner Detail Connection



Desking Connection Back Screen



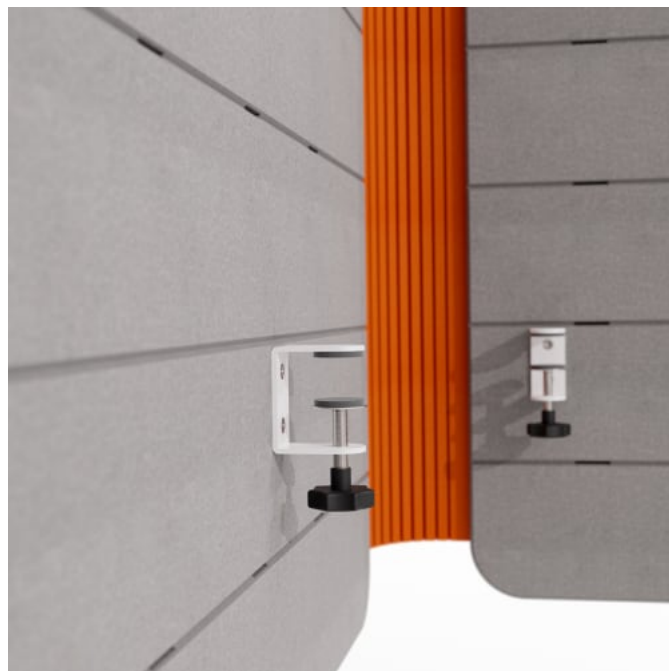
Corner Detail

cooee desking divider

Screens » Desking Screens



Cooee Tool Rail and Corner Detail



Below Desk Detail



Close up view

cooee desking divider

Screens » Desking Screens

Looking to dip your toe into the world of Cooee, start with one of our Cooee Desking Dividers and shut out your noisy neighbors.

- ✓ Absorbs Noise
- ✓ Acoustic
- ✓ Bleach Cleanable
- ✓ Easy Clean
- ✓ Easy Install

Description

Elevate your workspace with the transformative Cooee Desking Divider, seamlessly combining the functionality of a screen and a modesty solution in one. Redefine spatial dynamics; Its adaptable design allows placement on either side or at the back of your desk to keep monitor arms out of the way.

Experience a new standard of durability and stability with the Cooee Desking Divider. Its unique three-layer design sets it apart, ensuring a workspace that's not only visually stunning but also built to last.

Craft a workspace that reflects your unique style. Unlike other options, the Cooee Desking Divider features integrated Cooee Tool Rails on both sides. This innovative addition enhances organization, personalization, and customization possibilities.

Add a touch of personalization with our range of vibrant accessories which are available in 12 eye-popping powder coat colors.

What's more, it's designed to fit either the left or right side, maximizing utility.

Composition

Density 0.5 lb/ft² 2.4 kg /m²

cooee desking divider

Screens » Desking Screens

PET Colours

Standard Finishes:

30 Solid Colors: Bark, Brick, Cadet, Chambray, Cobalt, Ecru, Elderberry, Fossil, Frost, Grass, Greige, Ivory, Linen, Malachite, Mandarin, Meadow, Midnight, Ochre, Olive, Parchment, Pebble, Pewter, Saffron, Sky, Slate, Smoke, Storm, Sunshine, Tar, Twilight.

4 Timber Prints: Eucalyptus, Iron bark, Merbau, Spotted Gum.

Premium Finishes:

12 Premium Wood Prints: Australian Walnut, Cherry, Claro Walnut, Euro Beech, Knotty Pine, Lace Wood, Maple, Palm Wood, Poplar, Redwood, Rustic Walnut, White Oak.

18 Premium Material Prints: Concrete Cast, Concrete Polished, Concrete Dark Tint, Raku Bone, Raku Luster, Raku Jade, Shale Light, Shale Medium, Shale Dark, Terracotta Sun Bleached, Terracotta Mission, Terracotta Antique, Terrazzo Light, Terrazzo Medium, Terrazzo Dark, Travertine Light, Travertine Medium, Travertine Dark.

Material

- 60% post-consumer recycled PET bottles.
- 35% pre-consumer recycled content from PET chips
- 5% bio-based Polylactic Acid (PLA)

Accessories: Steel + PET insert/liner with powder coat finish

Powder Coat

Anodized Silver, Bengal White, Denim, Fern, Gunmetal, LT Grey, Marigold, Matte Black, Spice, Tango, Teal, Terracotta

Dimensions

23.8" (603mm) w x 30" (762mm) h x 1.5" (38mm) d

Fire Rating

ASTM-E84 – Class A classification
AS ISO 9705 – 2003 – Group 1 classification
EN-13501 – B-s2-d0 classification

Made In

USA

Lead Time

6-8 weeks

cooee desking divider

Screens » Desking Screens

Inclusions

PET Cooee Desking Divider x 1

White C-Clamp Bracket x 2

Corner Piece x 1

Assembly & Delivery

Flat pack delivery, minimal assembly required.

See installation instructions for detail.

Care Instructions

Dab func. with a damp clean cloth and mild solution of liquid detergent and warm water. Repeat using only clean water, then pat dry with a lint free cloth.

For difficult stains, use a solution of household bleach (10% bleach / 90% water).

To remove the bleach, repeat using a clean, water dampened cloth, then pat dry.

Always test in an inconspicuous area first and if you don't see the expected results, contact us.

Warranty

5-year warranty.

Additional Comments

To see how vivid the colors truly are, it's easy to request a sample through the "Request information" button on this page, or you can ask for one from your local sales guru

How to Specify

1. Select your PET Color

2. Select your quantity

Interlayer standard color is Slate. Optional color choice available

cooee desking divider

Screens » Desking Screens

Colour & Finish Options

func solid colors


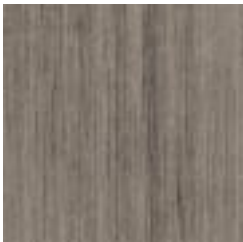
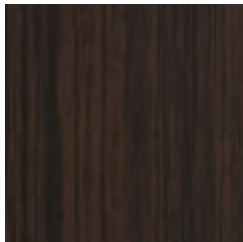
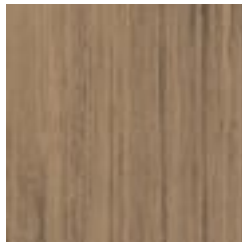


cooee desking divider




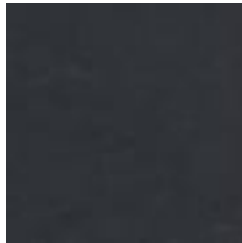
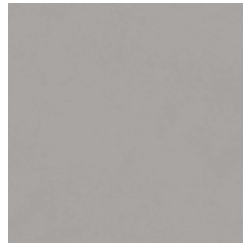
Screens » Desking Screens

pebble	pewter	saffron	smoke	storm
				
Twilight	Sunshine	Ochre	Sky	Tar

func timber print

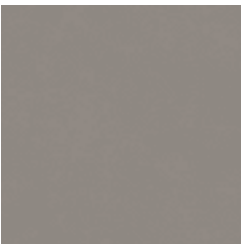
				
eucalyptus	ironbark	merbau	spotted gum	

func premium material

				
terrazzo light	terrazzo medium	terrazzo dark	travertine light	travertine medium
				
travertine dark	shale light	shale medium	shale dark	raku bone

cooee desking divider

Screens » Desking Screens



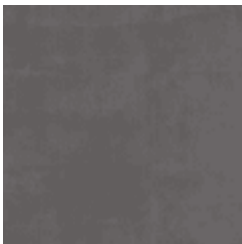
raku luster



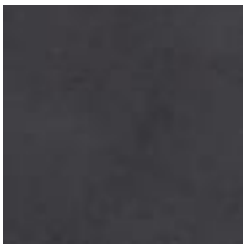
raku jade



concrete cast



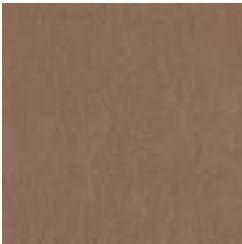
concrete polished



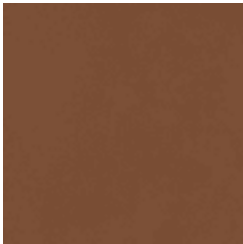
concrete dark tint



terracotta sun
bleached



terracotta mission



terracotta antique

func premium wood



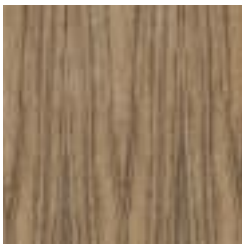
knotty pine



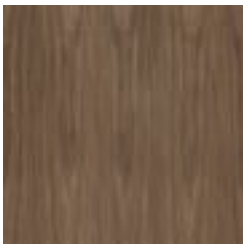
maple



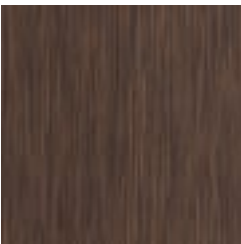
poplar



australian walnut



claro walnut



palmwood



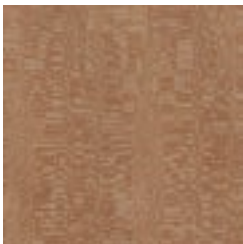
rustic walnut



cherry



euro beech



lacewood



redwood



white oak