

# COOEE MONITOR WALL

Walls » Mobile Walls



Collection: **Cooee**

# COOEE MONITOR WALL

Walls » Mobile Walls



BARK - PET



BRICK - PET



CADET - PET



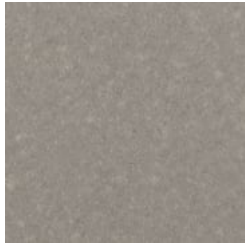
CHAMBRAY - PET



COBALT - PET



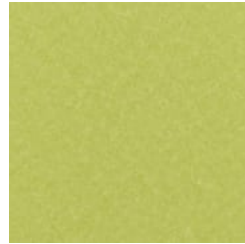
ECRU - PET



FOSSIL - PET



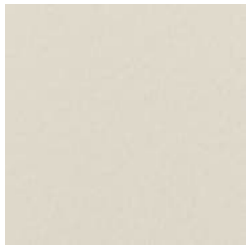
FROST - PET



GRASS - PET



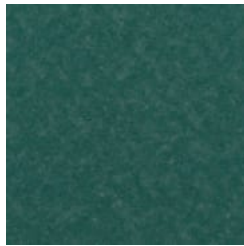
GREIGE - PET



IVORY - PET



LINEN - PET



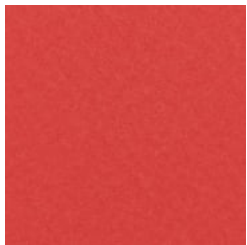
MALACHITE - PET



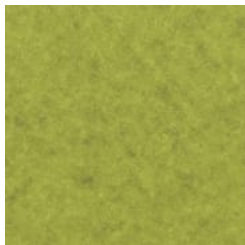
MANDARIN - PET



MIDNIGHT - PET



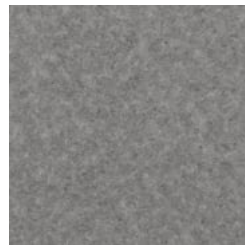
OCHRE - PET



OLIVE - PET



PEBBLE - PET



PEWTER - PET



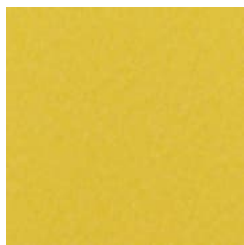
SKY - PET



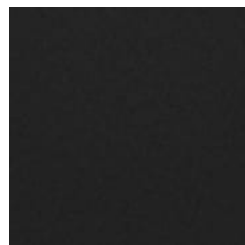
SLATE - PET



SMOKE - PET



SUNSHINE - PET



TAR - PET



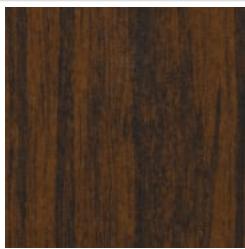
EUCALYPTUS - TIMBER  
PET

# COOEE MONITOR WALL

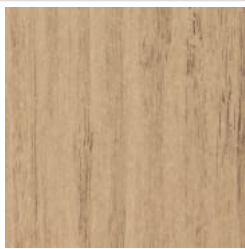
Walls » Mobile Walls



IRONBARK - TIMBER  
PET



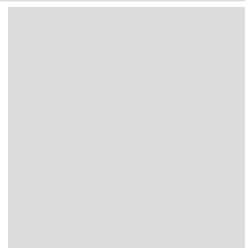
MERBAU - TIMBER PET



SPOTTED GUM -  
TIMBER PET



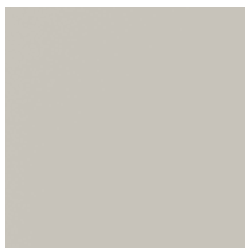
ANODISED SILVER -  
POWDER COAT



BENGAL WHITE -  
POWDER COAT



FERN - POWDER COAT



LT GREY - POWDER  
COAT



MATTE BLACK -  
POWDER COAT



SPICE - POWDER COAT



TANGO - POWDER  
COAT



TEAL - POWDER COAT



TERRACOTTA -  
POWDER COAT

# COOEE MONITOR WALL

Walls » Mobile Walls



Cooee Monitor Wall – your new mobile video conferencing room, complete with 110V, USB-A and USB-C Power units. Share screens and manage acoustics.

- Absorbs Noise
- Bleach Cleanable
- Easy Install
- Acoustic
- Easy Clean

## Description

Welcome to your new mobile video conferencing room.

The Cooee Monitor Wall adds 110V, USB-A and USB-C Power units and does what it says on the box. It's easy to plug in, attach a camera, and add a VESA mount for anything up to a 50" monitor. The sound absorbing material and acoustic membrane really help reduce annoying ambient noise.

Sharing screens and having remote meetings, makes managing acoustics even more important. Superior noise reduction is achieved when the sustainable, sound absorbing PET converting sound energy into heat. It's the must have for those of us who can't help sharing their screen.

func., Cooee Walls are easily cleaned with bleach and water.

## Made In

USA

## Dimensions

47.5" (1207mm) w x 78.5" (1994mm) h x 15" (380mm) d

# COOEE MONITOR WALL

Walls » Mobile Walls

---

**Powder Coat** Anodized Silver, Bengal White, Denim, Fern, Gunmetal, LT Grey, Marigold, Matte Black, Spice, Tango, Teal, Terracotta

---

**PET Colours** **24 Standard colors** – Bark, Brick, Cadet, Chambray, Cobalt, Ecrú, Fossil, Frost, Grass, Greige, Ivory, Linen, Malachite, Mandarin, Midnight, Ochre, Olive, Pebble, Pewter, Sky, Slate, Smoke, Sunshine, Tar.

**4 Timber Prints** – Eucalyptus, Iron bark, Merbau, Spotted Gum.

---

**Composition** Density 0.5 lb/ft<sup>2</sup> 2.4 kg /m<sup>2</sup>

---

**Material**

- 60% post-consumer recycled PET bottles.
- 35% pre-consumer recycled content from PET chips
- 5% bio-based Polylactic Acid (PLA)
- Accessories: Steel + PET insert/liner with powder coat finish

---

**Fire Rating** ASTM-E84 – Class A classification  
AS ISO 9705 – 2003 – Group 1 classification  
EN-13501 – B-s2-d0 classification

---

**Warranty** 5-year warranty.

---

**Lead Time** 6–8 weeks

---

**Assembly & Delivery** Flat pack delivery, minimal assembly required.  
See installation instructions for detail.

---

**How to Specify**

- Select 1 x PET Color
- Select 1 x Powder Coat Finish
- Refer Product Specification Guide

---

# COOEE MONITOR WALL

Walls » Mobile Walls

---

## Care Instructions

Dab func. with a damp clean cloth and mild solution of liquid detergent and warm water. Repeat using only clean water, then pat dry with a lint free cloth.

For difficult stains, use a solution of household bleach (10% bleach / 90% water).

To remove the bleach, repeat using a clean, water dampened cloth, then pat dry.

Always test in an inconspicuous area first and if you don't see the expected results, contact us.

---

## Additional Comments

To see how vivid the colors truly are, it's easy to request a sample through the "Request information" button on this page, or you can ask for one from your local sales guru

---

## Inclusions

Mobile wall with 2 cups, 2 hooks, 2 power units (110V + USB-A and USB-C)

---