

# ALINTA DESKING SCREEN

Screens » Desking Screens



Collection: **Alinta**

# ALINTA DESKING SCREEN

Screens » Desking Screens



BARK - PET



BRICK - PET



CADET - PET



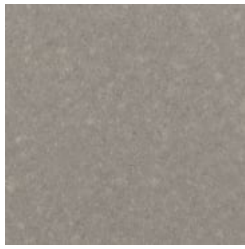
CHAMBRAY - PET



COBALT - PET



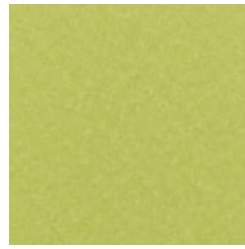
ECRU - PET



FOSSIL - PET



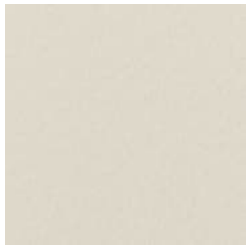
FROST - PET



GRASS - PET



GREIGE - PET



IVORY - PET



LINEN - PET



MALACHITE - PET



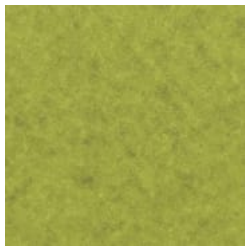
MANDARIN - PET



MIDNIGHT - PET



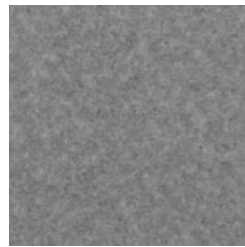
OCHRE - PET



OLIVE - PET



PEBBLE - PET



PEWTER - PET



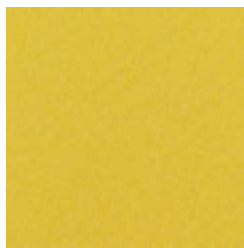
SKY - PET



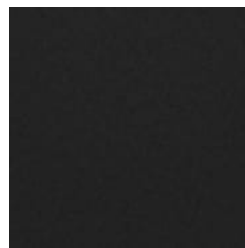
SLATE - PET



SMOKE - PET



SUNSHINE - PET



TAR - PET



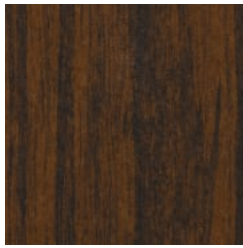
EUCALYPTUS - TIMBER  
PET

# ALINTA DESKING SCREEN

Screens » Desking Screens



IRONBARK - TIMBER  
PET



MERBAU - TIMBER PET



SPOTTED GUM -  
TIMBER PET



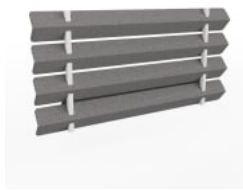
BLACK FRAME



BLONDE FRAME



DARK FRAME



WHITE FRAME

# ALINTA DESKING SCREEN

Screens » Desking Screens



Alinta Desking Screen turns almost any table into a desk. The horizontal spacing between the PET panels balances privacy, acoustics, and light.

● Easy Install

● Easy Clean

● Acoustic

## Description

The Alinta Desking Screen turns almost any table or worksurface into a desk. The adjustable clamp mounting makes it compatible with fixed or height adjustable surfaces, while the V-fold gives a strong, angular design with cable management. The design's horizontal spacing between the PET panels balances privacy, acoustics, and light.

This is highly configurable screen, with the 35" height available in 7 widths from 47"–72". All sizes come in 24 PET colors, 4 wood prints and the choice of blonde, dark, white, or black wood supports.

Manufactured in the USA, the Alinta Desking Screen ships quickly, comes flat packed and is simple to assemble.

func., Alinta Desking Screens are easily cleaned with bleach and water.

Made In

USA

# ALINTA DESKING SCREEN

Screens » Desking Screens

---

<b>Dimensions</b>	<ul style="list-style-type: none"><li>• 47" (1200mm) w x 35" (882mm) h x 8" (193mm) d</li><li>• 48" (1200mm) w x 35" (882mm) h x 8" (193mm) d</li><li>• 55" (1400mm) w x 35" (882mm) h x 8" (193mm) d</li><li>• 60" (1524mm) w x 35" (882mm) h x 8" (193mm) d</li><li>• 63" (1600mm) w x 35" (882mm) h x 8" (193mm) d</li><li>• 71" (1800mm) w x 35" (882mm) h x 8" (193mm) d</li><li>• 72" (1829mm) w x 35" (882mm) h x 8" (193mm) d</li></ul>
-------------------	---

---

<b>Frame</b>	Wood
--------------	------

---

<b>Powder Coat</b>	<ul style="list-style-type: none"><li>• White ONLY</li></ul>
--------------------	--

---

<b>PET Colours</b>	<p><b>24 Colors</b> – Bark, Brick, Cadet, Chambray, Cobalt, Ecu, Fossil, Frost, Grass, Greige, Ivory, Linen, Malachite, Mandarin, Midnight, Ochre, Olive, Pebble, Pewter, Sky, Slate, Smoke, Sunshine, Tar.</p> <p><b>4 Timber Prints</b> – Eucalyptus, Iron bark, Merbau, Spotted Gum.</p>
--------------------	---

---

<b>Wood</b>	<ul style="list-style-type: none"><li>• Blonde</li><li>• Dark</li><li>• White</li><li>• Black</li></ul>
-------------	---

---

<b>Composition</b>	Density 0.5 lb/ft <sup>2</sup> 2.4 kg /m <sup>2</sup>
--------------------	---

---

<b>Material</b>	<ul style="list-style-type: none"><li>• 60% post-consumer recycled PET bottles.</li><li>• 35% pre-consumer recycled content from PET chips</li><li>• 5% bio-based Polylactic Acid (PLA)</li><li>• Accessories: Steel + PET insert/liner with powder coat finish</li></ul>
-----------------	---

---

# ALINTA DESKING SCREEN

Screens » Desking Screens

---

**Fire Rating**                    ASTM-E84 – Class A classification  
AS ISO 9705 – 2003 – Group 1 classification  
EN-13501 – B-s2-d0 classification

---

**Warranty**                      5-year warranty.

---

**Lead Time**                     4 weeks

---

**Assembly & Delivery**       Flat pack delivery, minimal assembly required.  
  
See installation instructions for detail.

---

**How to Specify**                • Select 1 x PET Color  
  
• White Powder Coat Finish Only  
  
• Select 1 x Wood Finish  
  
• Refer Product Specification Guide

---

**Care Instructions**             Dab func. with a damp clean cloth and mild solution of liquid detergent and warm water. Repeat using only clean water, then pat dry with a lint free cloth.

For difficult stains, use a solution of household bleach (10% bleach / 90% water).

To remove the bleach, repeat using a clean, water dampened cloth, then pat dry.

Always test in an inconspicuous area first and if you don't see the expected results, contact us.

---

**Additional Comments**        To see how vivid the colors truly are, it's easy to request a sample through the "Request information" button on this page, or you can ask for one from your local sales guru.

---

**Inclusions**                      Desk Clamp Brackets, Wood supports, PET panels

---